



Edinburgh

ADAGIO
APARTHOTEL



A trip to Edinburgh made easy

Adagio and Auzou Éditions are pleased to offer every budding globetrotter their very own Family City Guide dedicated to Edinburgh!

Follow Wolf as he explores the city and check out his suggestions for the best things to do with your family!

From sports and sightseeing to hands-on activities and restaurants, the team at your Adagio aparthotel have thought of everything to make sure your city break is a breeze. All that's left is to make the most of your trip!

Ready to go?

It's time to have fun!

Let's go!



Culture & shows

| | |
|----------------------------------|---|
| Edinburgh Castle..... | 4 |
| National Museum of Scotland..... | 5 |



Discover

| | |
|---|---|
| Dynamic Earth..... | 6 |
| Camera Obscura & World of Illusions..... | 7 |



Sport & adventure

| | |
|--|---|
| Royal Zoological Society of Scotland..... | 8 |
| Ryze Edinburgh..... | 9 |



Eating out

| | |
|----------------|----|
| Antonieta..... | 10 |
|----------------|----|



Did you know?

Edinburgh Castle was built on an extinct volcano! The last time the volcano erupted was 350 million years ago. The site has been occupied since the Iron Age (200 AD) or possibly late Bronze Age.



Edinburgh Castle

Perhaps the most dramatic castle in the UK, standing on its great rock, Edinburgh Castle dominates the city and was home to kings and queens. Queen Margaret died here in 1093, and Mary Queen of Scots gave birth to James VI in the royal palace in 1566. From the 1600s onwards, the castle was a strong military base. The castle is now a world-famous visitor attraction and a key element of the Edinburgh World Heritage Site. The best way to enjoy all that the castle has to offer is to take a guided tour or use an audio guide. We recommend you allow at least 2 hours to see all the castle highlights and to get the most out of your visit!



Edinburgh Castle

Castlehill, Edinburgh, EH1 2NG

tel. +44 (0)131 225 9846

www.edinburghcastle.scot



11 mins' walk from your aparthotel



Typical opening hours:

April to September: daily, 9.30am - 6pm

October to March: 9.30am - 5pm

(last entry 1 hr before closing)



Typical prices:

Adults (aged 16+): £19.50

Young visitors (aged 7-15): £11.40

Free for children under 7



Available languages:

English, French, German, Spanish, Italian, Japanese, Russian and Mandarin (audio guides)

Hurray!

There are many ways to experience Edinburgh Castle! Choose an itinerary to follow based on how much time you have to spare or what interests you most (from just an hour up to 3 hours, please visit the website to find out more)



National Museum of Scotland

Explore the diversity of the natural world, art and design, world cultures, science and technology and Scottish history, all in one amazing building. From meteorites to monsters from the deep, the Natural World galleries tell the story of our planet. Meanwhile, the World Cultures galleries link people and possessions across the globe. Follow the story of Scotland from prehistory to the present day in the Scottish galleries and meet the Scots whose ideas, innovations and leadership took them around the world in the Discoveries gallery. Understand decorative arts in the new Art, Design and Fashion galleries and get front row seats at a catwalk of creativity in textiles and style. Over in Science and Technology, science is brought to life through interactive displays.



National Museum of Scotland

Chambers Street, Edinburgh, EH1 1JF

tel. +44 (0)300 123 6789

www.nms.ac.uk



9 mins' walk from your aparthotel



Typical opening hours:

Open daily, 10am - 5pm



Typical prices:

Free



Available languages:

English

Information booklets available in Chinese, Japanese, Russian, Polish, French, Spanish

Yum!

The Balcony Café (Level 3) and the Museum Kitchen (Level 0) welcome you for tea, coffee, homemade cakes, snacks as well as freshly prepared soup, sandwiches, salads and children's lunch boxes.



Dynamic Earth

A visit to Dynamic Earth is like nothing else on Earth. It's a chance to experience the primeval forces of nature as they shaped our planet, to journey through space and time and even to go on an adventure around the world. It's the interactive adventure of a lifetime – the lifetime of our planet. Allowing visitors to experience the extremities of the planet, from the summit of mountains to the depths of the sea, Dynamic Earth is one of the greatest interactive experiences in the world – and it's right here in Edinburgh!



Dynamic Earth

112 Holyrood Rd, Edinburgh, EH8 8AS

tel. +44 (0)131 550 7800

www.dynamicearth.co.uk



12 mins' walk from your aparthotel



Typical opening hours:

Monday to Friday, 10am - 3pm

Saturday and Sunday, 10am - 4pm

Visit duration: approximately 2-3 hrs



Typical prices:

Galleries and Planetarium :

Adults (aged 16+): £19.50

Young visitors (aged 4-15): £12

Free for children under 4



Available languages:

English, French, German,
Italian, Spanish (audio guides)



Cool!

Not got much time? We offer a planetarium-only ticket (£7.70 per person, adults and children) for a 30-minute experience where you can learn about the history of our planet, the solar system and beyond in an immersive 360-degree planetarium cinema.



Camera Obscura & World of Illusions

Edinburgh's Camera Obscura has been entertaining, surprising and educating locals and visitors for over 150 years. 50 years before motion pictures were invented, images of the city beamed down as if by magic amazed onlookers. Today, it is equally amazing to be able to take a virtual tour of the city without leaving the room! In addition to the camera itself, the World of Illusions offers five floors of original science attractions and 250 illusions, including a magic gallery and the mind-blowing Bewilderworld! Allow at least two hours to enjoy your trip here.



Camera Obscura & World of Illusions

549 Castlehill, The Royal Mile

Edinburgh, EH1 2ND

tel. +44 (0)131 226 3709

www.camera-obscura.co.uk



10 mins' walk from your aparthotel



Typical opening hours:

Opening hours vary, check online



Typical prices:

Adults: £21.95

Young visitors (aged 5-15): £16.95

Students / Over 65s: £19.95

Free for children under 5



Available languages:

French, German, Dutch, Spanish, Chinese and Italian (audio guides)

Brilliant!

Create your own souvenirs at Camera Obscura! Make a memory and take home a personalised keyring, magnet, notebook and more.



Royal Zoological Society of Scotland

One of Scotland's most popular visitor attractions, Edinburgh Zoo is just over 3 miles from the aparthotel. Among its almost 1,000 rare and endangered species, favourites include the UK's only pair of giant pandas. Edinburgh Zoo is a great day out for the whole family with lots of children's activities on offer. We recommend visitors attend at least one of the special talks that take place throughout the day, and plan their day using the Zoo's website to make the most of a place where there is almost too much to do!



Royal Zoological Society of Scotland
Edinburgh Zoo, 134 Corstorphine Road
Edinburgh, EH12 6TS
tel. +44 (0)131 334 9171
www.edinburghzoo.org.uk



Bus: Zoo (lines 12, 26, 31)
Bus Citylink: lines 900, 909, 904



Typical opening hours:
April to September: 10am - 6pm
October and March: 10am - 5pm
November to February: 10am - 4pm
Closed on Christmas Day



Typical prices:
Adults: £24.25
Young visitors (aged 3-15): £15.25
Free for children under 3



Hurray!

Immerse yourself in our walk-through exhibition included in your Edinburgh Zoo ticket and see prehistoric beasts come to life around you! The exhibition features moving and roaring animatronic dinosaurs – making it a real thrill for true adventurers!



Ryze Edinburgh

Children as young as two years old can enjoy this extreme action park – dubbed The Ultimate Trampoline Park. With more than 19,000 ft² of world-class trampolines, it's a great way to get fit as well as have a fantastic day out. Plan ahead to make sure you enjoy your visit: visitors need to sign a risk acknowledgement form and children under 16 need signed parental consent. All guests must also watch a safety video before they can enter the park. Prebooking is advised and guests should arrive at least 30 minutes before their scheduled slot.



Ryze Edinburgh

23 Mayfield Industrial Estate, Midlothian
Dalkeith, EH22 4AD
tel. +44 (0)131 634 0140
www.ryze.co.uk



Bus: Suttislea Place (line 48)



Typical opening hours:

Monday to Saturday, 9:30am - 9pm
Sunday, 9:30am - 6pm



Typical prices:

Open Jump (over 5s):
from £13 (1 hr) to £19.50 (2 hrs)
KidJump (aged 2-6):
from £9 (1 hr) to £15 (2 hrs)



For kids aged 2 and over



Tip!

You'll find lockers on-site to store your valuables (phones, money, jewellery etc.) starting from £1. Several free open cubby lockers are also available for less valuable items i.e. shoes or jackets etc.



Antonietta

If you love delicious, crispy pizzas full of flavour, this is the place to go! Antonietta Edinburgh offers authentic and freshly made pizza for all kinds of tastes. Made using the finest Italian ingredients and cooked in log-fired ovens, you are about to discover the authentic taste of real pizzas. A large range of pasta dishes and a children's menu are also available here. The Crolla family and their team have built an admirable reputation and have won dozens of prizes. They will enjoy welcoming you into the warm and friendly atmosphere they have created at Antonietta.



Antonietta

325-331 Leith Walk,
Edinburgh, Scotland, EH6 8SA
tel. +44 (0)131 554 2430

www.antoniettaedinburgh.co.uk



Bus: Pilrig Street (line 13)
Balfour Street (lines 7, 14, 16, 22,
25, 49, N16)



Typical opening hours:

Monday to Thursday, 5pm - 10pm
Friday to Sunday, 12pm - 10pm



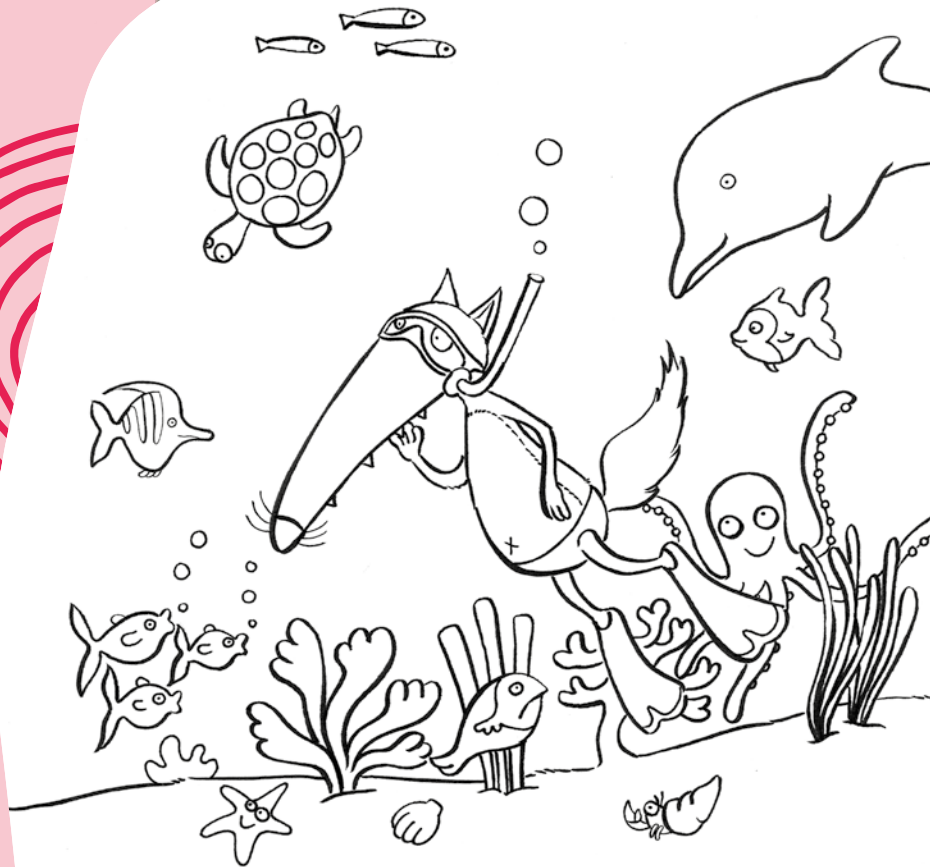
Typical prices:

Pizza from £11
Pasta from £12
Children's menu: £10



Wow!

Enjoy Antonietta's wonderfully colourful decor with fantastic food and drink for an unforgettable dining experience.



Follow us on social media

and share your photos of the activities
presented in the Adagio

Family City Guide! **#MyAdagio**



@Adagio



@Aparthotels_Adagio



ADAGIO SAS, a French société par actions simplifiée (simplified limited company) with share capital of €1,000,000, whose registered office is at L'Artois, Espace Pont de Flandre, 11 rue de l'Artois, 75947 Paris Cedex 19, France - Design & production: traitdejennie.com - Copyrights: Adobe Stock, Alfredo García Saz / National Museums of Scotland, Stewart Attwood / Dynamic Earth, James Hutton / Camera Obscura, Tony Marsh / Edinburgh Zoo / Ryze / Antonietta / AdobeStock - ShunTerra - Publication: 07/2023. The prices quoted by Adagio include taxes and are purely indicative. Prices are set by the companies offering the activities. Contact the Adagio team if you wish to check whether certain activities are open to the public. ©2023/Loup - Auzou - O.Lallemand - E.Thuillier

Here for you
adagio-city.com

ADAGIO
APARTHOTEL